



## Bungalow i Alhama De Murcia - Nybygget

ALHAMA DE MURCIA

208.900€

ID # N7154



90m<sup>2</sup>



3



2



20m<sup>2</sup>



• Swimming pool: Fælles

• Tæt på golfbane

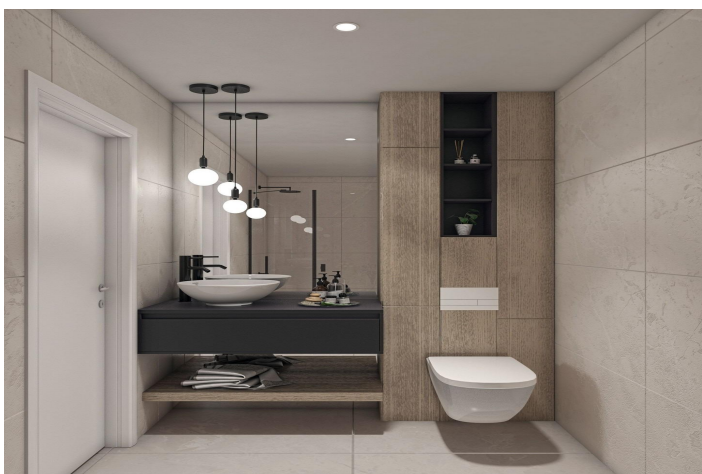
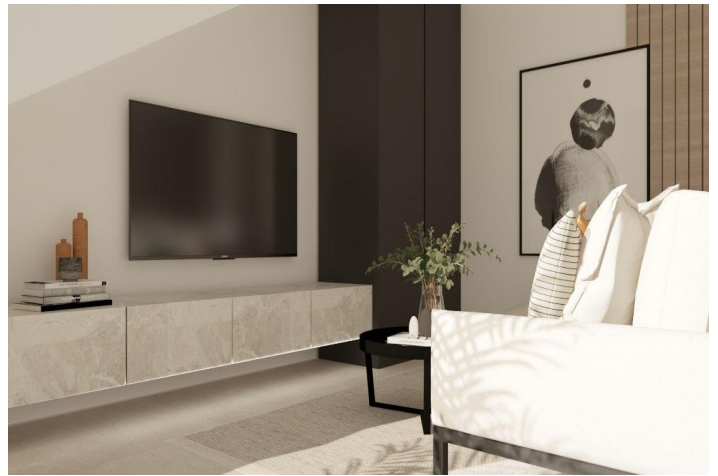
**Lexington Realty**

C/ Finlandia 19, Bl. 1, Loc. 2  
Commercial Centre Gran Alacant  
03130 Santa Pola, ALICANTE

**Contact us**

W: [www.lexington-realty.com](http://www.lexington-realty.com)  
T: +34 966 69 51 52  
M: [contact@lexington-realty.com](mailto:contact@lexington-realty.com)





## Description

NEW BUILD BUNGALOW APARTMENTS IN CONDADO DE ALHAMA GOLF COURSE

New Build exclusive complex of 18 bungalows apartments in Condado de Alhama.

Beautiful bungalows with 2 or 3 bedrooms and 2 bathrooms, been designed with the wellbeing and quality of life of their inhabitants in mind.

Residential offers spacious communal areas, including several communal swimming pools, one of which is heated, where you can enjoy moments of relaxation and fun.

In addition, the complex has landscaped areas for strolling and enjoying the surroundings, as well as parking areas designed for the convenience of residents.

The ground floor bungalows have 3 bedrooms and generous gardens, ideal for spending time outdoors and organising get-together with family and friends.

The top floors, on the other hand, have 2 bedrooms and a spacious solarium that allows you to make the most of the sunlight and views of the natural surroundings.

Condado de Alhama Golf Resort is a fantastic Golf Resort with many facilities and services . A shopping centre, a sports centre, a variety of bars and restaurants, supermarkets and over 25 communal swimming pools and gardens.

Condado de Alhama Golf Resort has its own Jack Nicklaus designed golf course and is only 15 minutes from the beautiful beaches of Bolnuevo and Mazarron.

Mazarron has over 35 km of coastline, much of which is unspoilt coastline. Numerous beaches in the Bay of Mazarron have been awarded the Blue Flag for their quality.

Condado de Alhama Golf Resort is only 20 minutes from the new Corvera International Airport.

## Område

Alhama De Murcia





**Lexington Realty**

C/ Finlandia 19, Bl. 1, Loc. 2  
Commercial Centre Gran Alacant  
03130 Santa Pola, ALICANTE

**Contact us**

W: [www.lexington-realty.com](http://www.lexington-realty.com)  
T: +34 966 69 51 52  
M: [contact@lexington-realty.com](mailto:contact@lexington-realty.com)

