



Villa i Fuente Álamo - Nybygget

FUENTE ÁLAMO

295.000€

ID # N6877



180m²



3



2



850m²

• Tagterasse

• Tæt på golfbane

• Pre-installed air conditioning

Lexington Realty

C/ Finlandia 19, Bl. 1, Loc. 2
Commercial Centre Gran Alacant
03130 Santa Pola, ALICANTE

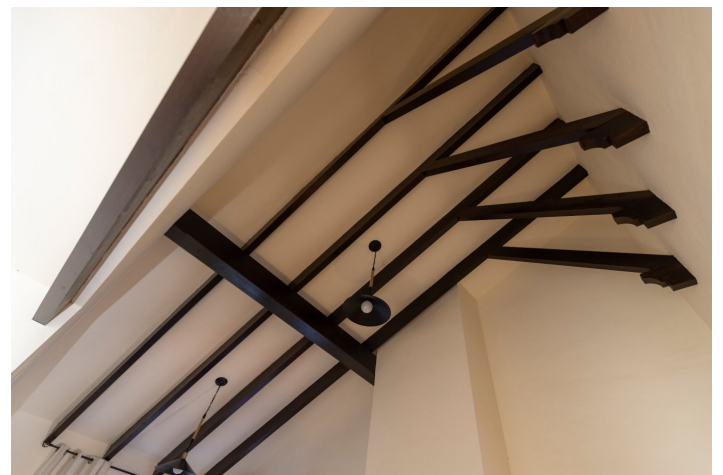
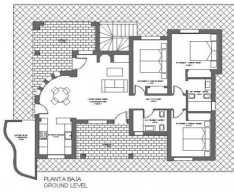
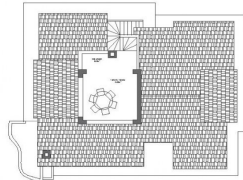
Contact us

W: www.lexington-realty.com
T: +34 966 69 51 52
M: contact@lexington-realty.com





PARCELA PLOT SIZE 8:	825 m ²	SUPERFICIE ÚTIL LINEAL AREA:	146.77 m ²
PARCELA PLOT SIZE 18:	865 m ²	SUR CONSTRUIDA CUBIERTA:	159.23 m ²
PARCELA PLOT SIZE 6:	826 m ²	COVERED BUILT AREA	
PARCELA PLOT SIZE 17:	857 m ²	SUR CONSTRUIDA TOTAL:	180.49 m ²
		TOTAL BUILT AREA	



Description

KEY READY VILLA IN FUENTE ALAMO, MURCIA

Residential of townhouses, independent and semi-detached villas in Fuente Álamo, Murcia.

There are seven different models of houses to choose from, designed to suit everyone's taste.

Rustic designs combined with top quality materials and a focus on comfortable living space there is something for everyone. The residents of this private community of beautiful, spacious homes will also be able to enjoy their own communal gardens and swimming pools.

This unusual design villa has 3 bedrooms and 2 bathroom, independent kitchen, living room with patio doors leading onto the covered porch.

An options for a private pool at an extra cost.

Fuente Álamo de Murcia is a town and municipality in the Region of Murcia, southern Spain. It is situated 22 km northwest of Cartagena and 35 km south west of Murcia.

The town lies in the basin of the Mar Menor surrounded by the mountains of Algarrobo, Los Gómez, Los Victorias and the Carrascoy.

The water from these mountains flows down into the Rambla de Fuente Álamo and then onto the Mar Menor.

Fuente Álamo located 30 minutes from Murcia - Corvera airport.

Område

Fuente Álamo





Lexington Realty

C/ Finlandia 19, Bl. 1, Loc. 2
Commercial Centre Gran Alacant
03130 Santa Pola, ALICANTE

Contact us

W: www.lexington-realty.com
T: +34 966 69 51 52
M: contact@lexington-realty.com

