

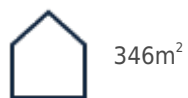


## Villa i Moraira\_Teulada - Nybygget

MORAIRA\_TEULADA

1.695.000€

ID # N6425



346m<sup>2</sup>



4



4



13000m<sup>2</sup>



- Swimming pool: Privat
- Tæt på skoler
- Tagterrasse
- Kælder
- Pre-installed air conditioning

**Lexington Realty**

C/ Finlandia 19, Bl. 1, Loc. 2  
Commercial Centre Gran Alacant  
03130 Santa Pola, ALICANTE

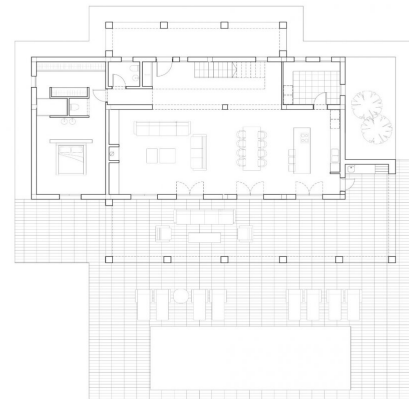
**Contact us**

W: [www.lexington-realty.com](http://www.lexington-realty.com)  
T: +34 966 69 51 52  
M: [contact@lexington-realty.com](mailto:contact@lexington-realty.com)



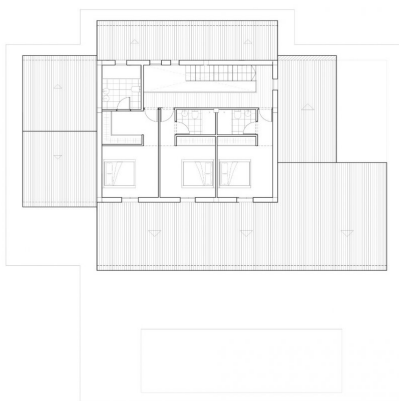


Superficie	Construida
Puerta Baja	
Vivienda	188.35 m <sup>2</sup>
Panorche 1	22.84 m <sup>2</sup>
Panorche 2	77.07 m <sup>2</sup>
Terreno	147.25 m <sup>2</sup>
Piscina	48.02 m <sup>2</sup>
Pavimento	62.41 m <sup>2</sup>
Puerta Alta	
Vivienda	97.00 m <sup>2</sup>
Puerta Sótano	
Vivienda	81.54 m <sup>2</sup>
Bodega	12.40 m <sup>2</sup>



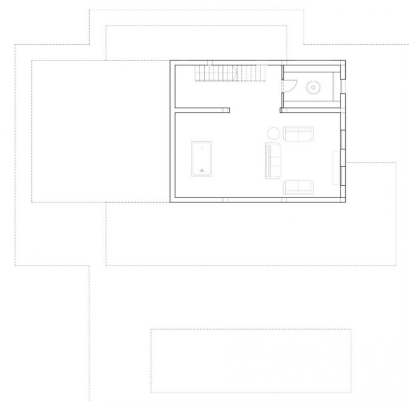
PLANTA BAJA

Superficie	Construida
Puerta Baja	
Vivienda	188.35 m <sup>2</sup>
Panorche 1	22.84 m <sup>2</sup>
Panorche 2	77.07 m <sup>2</sup>
Terreno	147.25 m <sup>2</sup>
Piscina	48.02 m <sup>2</sup>
Pavimento	62.41 m <sup>2</sup>
Puerta Alta	
Vivienda	97.00 m <sup>2</sup>
Puerta Sótano	
Vivienda	81.54 m <sup>2</sup>
Bodega	12.40 m <sup>2</sup>



PLANTA ALTA

Superficie	Construida
Puerta Baja	
Vivienda	188.35 m <sup>2</sup>
Panorche 1	22.84 m <sup>2</sup>
Panorche 2	77.07 m <sup>2</sup>
Terreno	147.25 m <sup>2</sup>
Piscina	48.02 m <sup>2</sup>
Pavimento	62.41 m <sup>2</sup>
Puerta Alta	
Vivienda	97.00 m <sup>2</sup>
Puerta Sótano	
Vivienda	81.54 m <sup>2</sup>
Bodega	12.40 m <sup>2</sup>



PLANTA SÓTANO



## Description

Newly built villa in Teulada with mountain views

On the ground floor we find a large living-dining area and open plan kitchen, master bedroom with walking wardrobe and bathroom, front terrace with access to the pool.

On the first floor is 3 bedrooms with fitted wardrobes, 3 bathrooms en suite.

As well here you have basement of 81m2 with wine cellar.

Villa will be build using high quality materials.

The kitchen will be chosen by the client, kitchen cabinets, worktop and appliances.

Air conditioning with climate control system (condense) in the living rooms and bedrooms.  
Mitsubishi brand.

The swimming pool will be built with an outdoor shower (hot/cold water connection).

Automatic entrance gate for the cars with remote control and automatic pedestrian door.

Garden to be chosen by the client.

Moraira is a small town with with good restaurants, bars and plenty of supermarkets around.

There is a very pleasant beach right next to town that is great for families.

The seafront offers tremendous views of Penon Ifach across the bay in Calpe. The coast road getting there is well worth doing with some spectacular views.

Moraira situated about 1 hour 15 minutes North up the A7 from Alicante airport its fairly easy to get to. It's about the same distance or a little less South from Valencia airport.

## Område

Moraira\_Teulada, Costa Blanca Syd, Alicante





**Lexington Realty**

C/ Finlandia 19, Bl. 1, Loc. 2  
Commercial Centre Gran Alacant  
03130 Santa Pola, ALICANTE

**Contact us**

W: [www.lexington-realty.com](http://www.lexington-realty.com)  
T: +34 966 69 51 52  
M: [contact@lexington-realty.com](mailto:contact@lexington-realty.com)

