



## Dobbelthus i Alfás del Pi - Gensalg

ALFAS DEL PI

450.000€

ID # ES4681 C



180m<sup>2</sup>



5



2



550m<sup>2</sup>



- Swimming pool: Ja
- Grill
- Pullterrum

- Laundry
- Centralvarme

- Terrasse
- Pejs

- Garage
- Sikkerhedsdør

- A/C

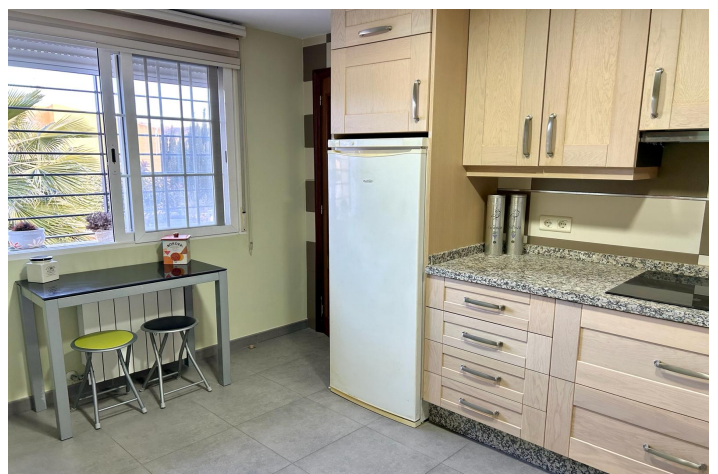
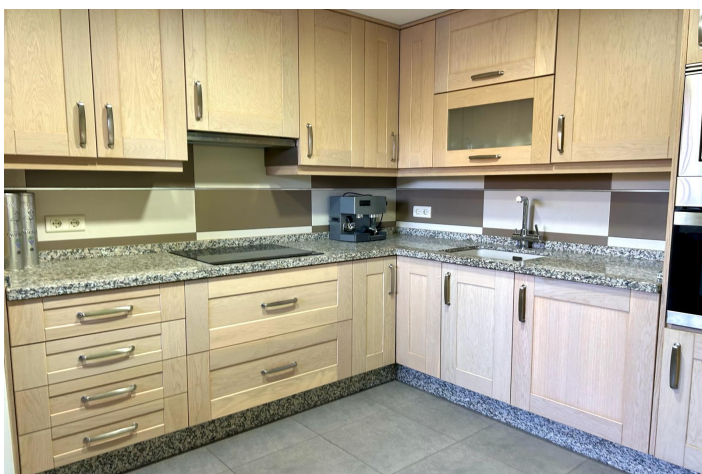
**Lexington Realty**

C/ Finlandia 19, Bl. 1, Loc. 2  
Commercial Centre Gran Alacant  
03130 Santa Pola, ALICANTE

**Contact us**

W: [www.lexington-realty.com](http://www.lexington-realty.com)  
T: +34 966 69 51 52  
M: [contact@lexington-realty.com](mailto:contact@lexington-realty.com)





## Description

Fantastic semi-detached house located in a very quiet area of Alfaz del Pi. The house is distributed over 3 floors. The ground floor consists of a charming front patio, entrance hall, a spacious and bright living room with fireplace, 1 guest toilet, a large fully furnished and equipped kitchen, 1 large bedroom with en-suite bathroom, as well as, the staircase leading to the other two floors of the house. The first floor consists of 3 large bedrooms, one of them has a large terrace overlooking the outdoor area, 1 office, as well as a bathroom. The basement consists of a second living room, open plan kitchen with direct access to the barbecue, summer kitchen, 1 guest toilet, 2 storage rooms, as well as a large multipurpose space. In the outdoor area we can find beautiful garden areas, a large swimming pool with a waterfall system and counter-current swimming, outdoor shower and chill out area. Closed garage for 3-4 vehicles, as well as a storage room. The house is equipped with air conditioning, mosquito nets, fitted wardrobes, central heating and pellet stove among others.

## Område

Alfas del Pi, Costa Blanca Nord, Alicante



## Lexington Realty

C/ Finlandia 19, Bl. 1, Loc. 2  
Commercial Centre Gran Alacant  
03130 Santa Pola, ALICANTE

## Contact us

W: [www.lexington-realty.com](http://www.lexington-realty.com)  
T: +34 966 69 51 52  
M: [contact@lexington-realty.com](mailto:contact@lexington-realty.com)

