



## Apartment in Cartagena - New build

CARTAGENA

260,000€

ID # N6792



112m<sup>2</sup>



2



2



• Swimming pool: Communal

• Close To Schools

• Lift

• Pre-installed air conditioning

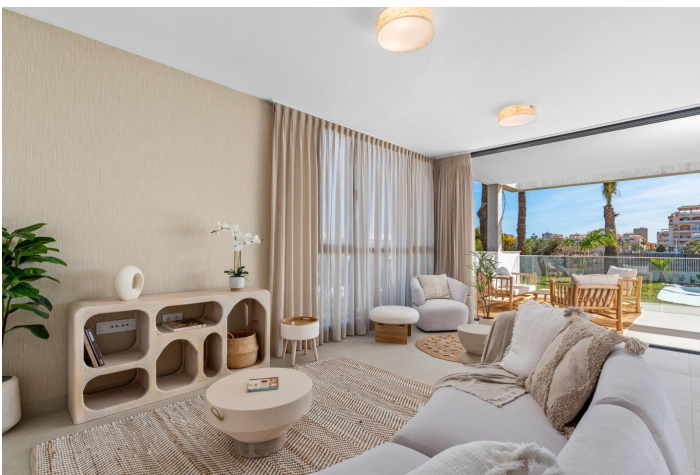
**Lexington Realty**

C/ Finlandia 19, Bl. 1, Loc. 2  
Commercial Centre Gran Alacant  
03130 Santa Pola, ALICANTE

**Contact us**

W: [www.lexington-realty.com](http://www.lexington-realty.com)  
T: +34 966 69 51 52  
M: [contact@lexington-realty.com](mailto:contact@lexington-realty.com)





## Description

NEW BUILD RESIDENTIAL COMPLEX IN MAR DE CRISTAL

New Build modern residential complex of apartments and penthouses located very close to the promenade and the long lovely sandy beaches of Mar de Cristal.

You can choose from ground floor apartments with a private garden, mid-floor apartments with a terrace, and penthouses with private solarium. Properties has 2 or 3 bedrooms and 2 bathrooms.

The apartments have a modern design, presenting an open plan living area, combining the kitchen, dining area and lounge, into a large space with access to the terrace.

The master bedroom has a private bathroom.

Built with top quality finishes, fitted wardrobes, pre-installation of ducted A/C, a storage room, and a underground parking space.

All the daily necessities, like supermarkets, bars and restaurants, are available all year 'round and are located close to the complex.

Mar de Cristal has beautiful sandy beaches, a tennis centre, marina, supermarkets, bars and restaurants.

The Calblanque national park where you will find unspoilt long white sandy beaches, as well as the famous La Manga Club and the bustling town of Los Belones are all within a 5 min drive from the village.

Murcia airport is 25 mins and Alicante 1 hour drive.

You can also visit the historic cities of Cartagena and Murcia.

## Location

Cartagena





**Lexington Realty**

C/ Finlandia 19, Bl. 1, Loc. 2  
Commercial Centre Gran Alacant  
03130 Santa Pola, ALICANTE

**Contact us**

W: [www.lexington-realty.com](http://www.lexington-realty.com)  
T: +34 966 69 51 52  
M: [contact@lexington-realty.com](mailto:contact@lexington-realty.com)

