



## Apartment in San Pedro del Pinatar - New build

SAN PEDRO DEL PINATAR

276,900€

ID # N8082



133m<sup>2</sup>



3



2



• Swimming pool: Communal

• Close To Schools

• Lift

• Pre-installed air conditioning

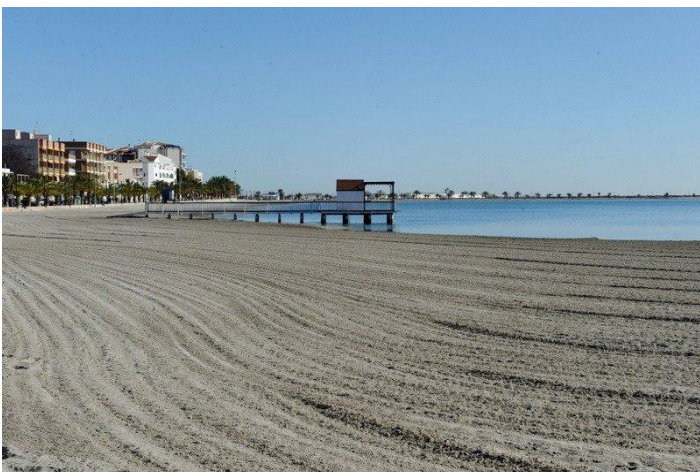
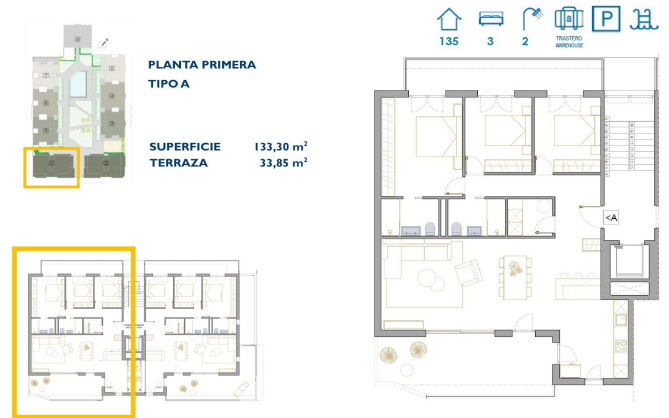
**Lexington Realty**

C/ Finlandia 19, Bl. 1, Loc. 2  
Commercial Centre Gran Alacant  
03130 Santa Pola, ALICANTE

**Contact us**

W: [www.lexington-realty.com](http://www.lexington-realty.com)  
T: +34 966 69 51 52  
M: [contact@lexington-realty.com](mailto:contact@lexington-realty.com)





## Description

NEW BUILD RESIDENTIAL IN SAN PEDRO DEL PINATAR

New Build residential complex of modern apartments and penthouses in San Pedro Del Pinatar .

Apartments and penthouses with 2 and 3 bedrooms, 2 bathrooms, with open plan kitchen with living area, large terraces, fitted wardrobes, fully equipped bathrooms, terraces.

Ground floor apartments has aprivate garden and top floor penthouses has private solarium.

Each property has underground parking with storage rooms

Landscaping and gardening in the common areas with a careful selection of species appropriate for the area. Complete installation of swimming pool with gresite finish,

built-in lighting and with purification system and equipment

in a built-in, floor-recessed cabin.

San Pedro del Pinatar's privileged location on the Mar Menor and Mediterranean coastline it attracts those with an interest in sailing and watersports, providing marina mooring and sailing clubs, while the beaches and natural mud baths attract those seeking safe sun, sea and sand.

San Pedro del Pinatar has an established community and offers an excellent range of activities, including covered swimming pool and sports facilities, as well as a year round programme of social activities by the pleasant winter weather. The benefits of the mud baths, typical of the region, or the calm waters of the Mar Menor, have favoured the growth of Lo Pagán, which currently has all kind of amenities. In addition, it has an excellent location, just 5 minutes from the Commercial Centre Dos Mares.

Murcia/Corvera airport is 30 minutes away and Alicante airport is an hour drive away.

## Location

San Pedro del Pinatar, Costa Calida - Murcia

Nestled at the northern end of the Mar Menor, San Pedro del Pinatar is a picturesque coastal town steeped in history and natural beauty. Its name is derived from a quaint church dedicated to San Pedro, surrounded by serene pine tree groves. With its rich blend of agriculture, fishing, and a thriving tourist scene, San Pedro del Pinatar offers a diverse range of experiences for visitors.

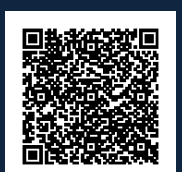
Immerse yourself in the town's rich history by exploring the Palace of the Baron of Benefayó,...

### Lexington Realty

C/ Finlandia 19, Bl. 1, Loc. 2  
Commercial Centre Gran Alacant  
03130 Santa Pola, ALICANTE

### Contact us

W: [www.lexington-realty.com](http://www.lexington-realty.com)  
T: +34 966 69 51 52  
M: [contact@lexington-realty.com](mailto:contact@lexington-realty.com)





**Lexington Realty**

C/ Finlandia 19, Bl. 1, Loc. 2  
Commercial Centre Gran Alacant  
03130 Santa Pola, ALICANTE

**Contact us**

W: [www.lexington-realty.com](http://www.lexington-realty.com)  
T: +34 966 69 51 52  
M: [contact@lexington-realty.com](mailto:contact@lexington-realty.com)

