

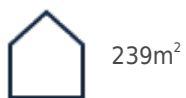


Detached Villa in Benitachell - New build

BENITACHELL

2,456,000€

ID # N7849



239m²



3



4



932m²



• Swimming pool: Private

• Close To Schools

• Basement

• Pre-installed air conditioning

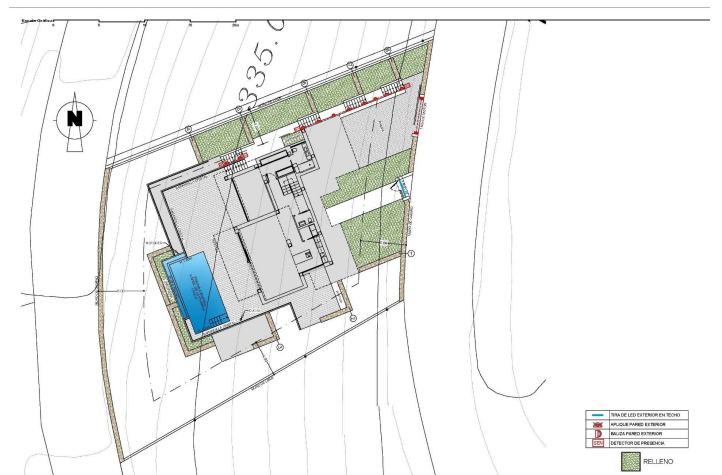
Lexington Realty

C/ Finlandia 19, Bl. 1, Loc. 2
Commercial Centre Gran Alacant
03130 Santa Pola, ALICANTE

Contact us

W: www.lexington-realty.com
T: +34 966 69 51 52
M: contact@lexington-realty.com





Description

NEW BUILD LUXURY VILLA IN CUMBRE DEL SOL

New Build luxury villa with spectacular sea views is ideal to live in with the family or to enjoy with friends. It is located at the top of Puig de la Llorençà, in the Residential Cumbre del Sol dominating over the residential area and with an unbeatable sea view. A unique and exclusive place in the North Costa Blanca region.

Its modern architecture, based on straight lines, combined with the Mediterranean style blends perfectly with its surroundings. This villa has been completely designed to enhance functionality and comfort, without cutting back an ounce on design. The villa is surrounded by a large garden with indigenous plants and elements. A feature that particularly stands out is the natural stone walls.

The villa has a private parking area on the top floor for up to two vehicles, since access to the villa is located on the same floor.

Once inside, we will find two bedrooms with a private bathroom and terrace to be able to enjoy the sea views at any time of the day.

We go down to the main floor where the main suite of this villa is located. A very spacious room with a modern walk-in dressing room with large wardrobes. The room's private bathroom will surprise you, starting with its large size. Its equipment, based on designer bathroom fittings from renowned brands, together with the possibility of taking baths with sea views, make it one of the most exclusive places of this villa.

The villa has a kitchen equipped with top brand electrical appliances and a large island where you can cook with your family or with friends on long days. The living room provides a warm atmosphere thanks to the wide open spaces and natural light, a perfect place to just relax.

And to finish on this floor, an extraordinary infinity pool on the terrace, from where you can enjoy refreshing swims while contemplating the immensity of the sea.

On this same terrace we can find a covered area, which will allow you to enjoy the outdoors practically all year round, thanks to the mild climate of the area.

The basement is a wide-open empty space ready for you to customize it however you like. It could be turned into a fourth bedroom, an office, a games room or even a gym. The options are endless.

The villa is equipped to the standards of it. It has high range services: a furnished kitchen with designer furniture, top brand electrical appliances, under floor heating..., take a look at the quality report, it will no leave you indifferent.

All these features make this Villa a perfect option to enjoy a Mediterranean lifestyle.

If you are looking for a home that is different, Villa provides the additional space to that will make your day-to-day special.

Location

Benitachell, Costa Blanca North, Alicante

Benitachell, also known as El Poble Nou de Benitatxell, is a small and picturesque village located on the Costa Blanca in the province of Alicante, Spain. Situated between the towns of Jávea and Moraira, Benitachell offers a peaceful and charming atmosphere with a blend of traditional Spanish character and modern amenities.

Lexington Realty

C/ Finlandia 19, Bl. 1, Loc. 2
Commercial Centre Gran Alacant
03130 Santa Pola, ALICANTE

Contact us

W: www.lexington-realty.com
T: +34 966 69 51 52
M: contact@lexington-realty.com



One of the notable features of Benitachell is its location on a hillside, offering panoramic views of the Mediterranean Sea and the surrounding countryside. The...



Lexington Realty

C/ Finlandia 19, Bl. 1, Loc. 2
Commercial Centre Gran Alacant
03130 Santa Pola, ALICANTE

Contact us

W: www.lexington-realty.com
T: +34 966 69 51 52
M: contact@lexington-realty.com

