



## Detached Villa in Alhama De Murcia - New build

ALHAMA DE MURCIA

367,500€

ID # N6888



149m<sup>2</sup>



4



3



452m<sup>2</sup>

• Close To Schools

• Roof terrace

• Near to golf

• Pre-installed air conditioning

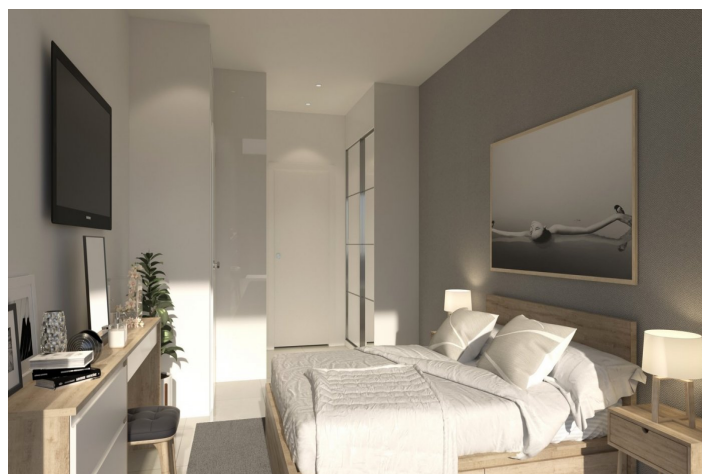
**Lexington Realty**

C/ Finlandia 19, Bl. 1, Loc. 2  
Commercial Centre Gran Alacant  
03130 Santa Pola, ALICANTE

**Contact us**

W: [www.lexington-realty.com](http://www.lexington-realty.com)  
T: +34 966 69 51 52  
M: [contact@lexington-realty.com](mailto:contact@lexington-realty.com)







## Description

MEDITERRANEAN VILLA ON THE GOLF COURSE

Villa next to the golf course in Alhama.

The complex is supervised 24h/24h. You will find a commercial centre with many restaurants, shops, hairdresser, supermarket, etc. The project is about 15 minutes from the beaches of Mazarron and Murcia International Airport, and 30 minutes from the Natural Park of Sierra Espuña.

Located in the heart of the Costa Cálida, between big cities like Murcia and Cartagena.

## Location

Alhama De Murcia



### Lexington Realty

C/ Finlandia 19, Bl. 1, Loc. 2  
Commercial Centre Gran Alacant  
03130 Santa Pola, ALICANTE

### Contact us

W: [www.lexington-realty.com](http://www.lexington-realty.com)  
T: +34 966 69 51 52  
M: [contact@lexington-realty.com](mailto:contact@lexington-realty.com)

