



Spacious bungalow with panoramic views

ALBIR

350,000€

ID # CB8222



150 m²



4



2



113 m²



- Swimming pool: Communal
- Gated Community
- Close To Schools
- Ground floor
- South facing
- Near the beach
- Terrace
- Garage
- Near to supermarket
- Near to golf
- Guest apartment
- Residential
- Mountain views
- Independent kitchen
- Near to restaurant

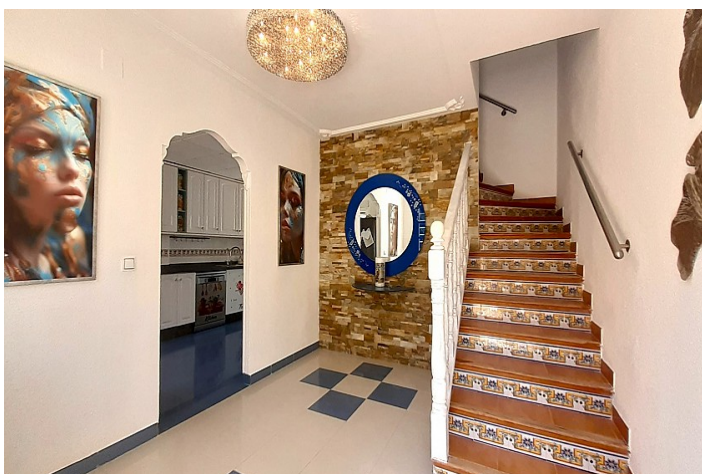
Lexington Realty

C/ Finlandia 19, Bl. 1, Loc. 2
Commercial Centre Gran Alacant
03130 Santa Pola, ALICANTE

Contact us

W: www.lexington-realty.com
T: +34 966 69 51 52
M: contact@lexington-realty.com





Description

Spacious bungalow with panoramic views

The south faced bungalow is located in small urbanization in a quiet area of Albir.

The property which is constructed in 1993 are distributed in three floors. 199 m2 constructed hereof is 150 habitable.

Main floor, 49 m2 livable area, is entered by the 29 square meter south facing terrace.

The entrance hall has a staircase to upper floor. Left from the main door is large independent kitchen with dining area and access to a terrace on the other side of the house, overlooking the gated community garden with a large pool.

In the kitchen is a door to a bedroom and to a staircase leading to the lower floor. This door being closed or blinded, then you have a separate apartment in the lower floor.

Besides a little hallway and a bathroom with a shower, lower floor has at large living room with an open kitchen. From here there is access to a 43 m2 terrace. This terrace is in level with the community garden and the pool. The terrace door can be used as a main entrance to the lower floor, so in that way your separate apartment consists of: living room with a kitchen, a bathroom, a hallway and a bedroom.

Upper floor has three bedrooms. Two of them are now joined into a living room or television lounge.

The third bedroom has inbuilt wardrobe and also access to a small terrace with panoramic views to the mountains. There is a little view to the bay of Altea with the harbor and you can see another part of the bay with the spectacular Mountain "Peñon de Ifach" in Calpe. A nice bathroom with shower is also present on this floor.

The property has internet connection by ADSL and a private underground parking space are available.

The main street of Albir is within a range of approximately 1000 meter, offering a great variety of shops, supermarkets, restaurants and cafés.

For golf players, Albir has a driving range. The three nearest golf courts are 10, 11 and 15 kilometers away. The distance to Alicante Airport is 63 kilometers. Only a 43 minutes' drive.

The property is located next to the natural park of Sierra Helada, which is a famous walking and recreative area. You can take the easy walked mountain route to the light house of Albir or just walk 1200 meters downhill to the beach.

A very well-maintained property, with a lot of possibilities.

