



## Detached Villa in Benitachell - New build

**BENITACHELL**

**2,195,000€**

**ID # SP0703**



188m<sup>2</sup>



3



5



847m<sup>2</sup>



• Swimming pool: Private

• Jacuzzi

• Basement

• Barbecue

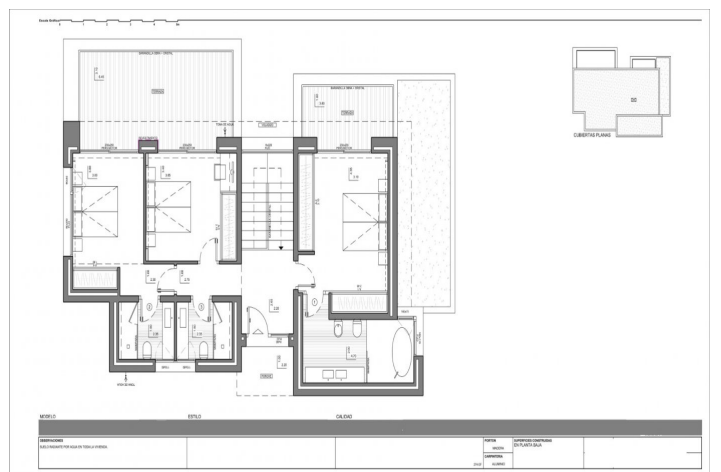
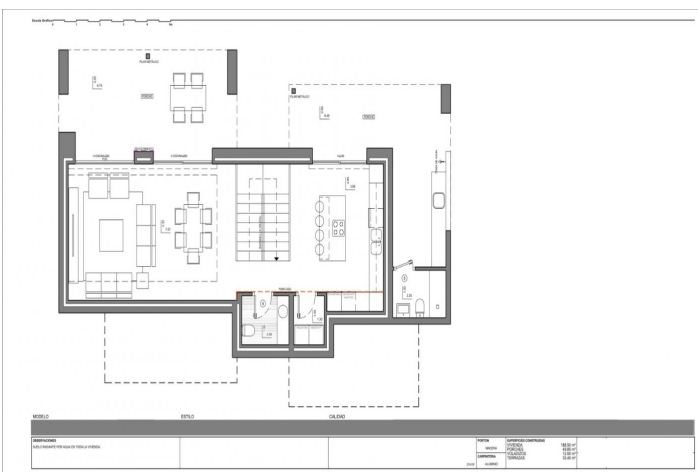
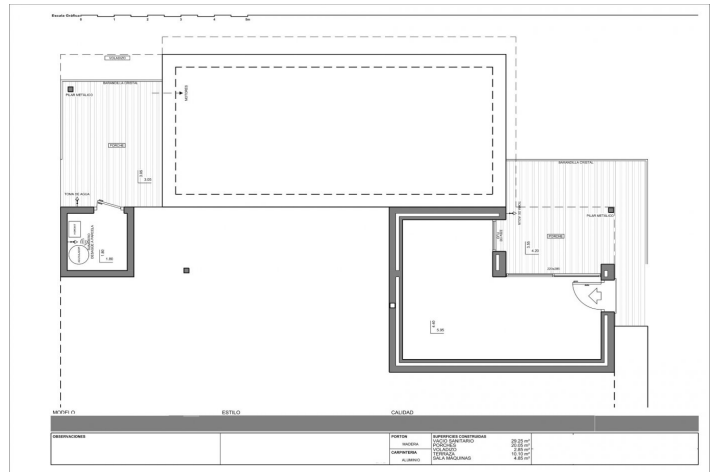
**Lexington Realty**

C/ Finlandia 19, Bl. 1, Loc. 2  
Commercial Centre Gran Alacant  
03130 Santa Pola, ALICANTE

**Contact us**

W: [www.lexington-realty.com](http://www.lexington-realty.com)  
T: +34 966 69 51 52  
M: [contact@lexington-realty.com](mailto:contact@lexington-realty.com)





## Description

### NEW BUILD LUXURY VILLA IN CUMBRE DEL SOL

To relax and get away from it all, surrounded by incredible sea views; it is possible in this exclusive villa located in the Residential Resort Cumbre del Sol.

New Build Luxury villa is distributed over several floors, in open and comfortable spaces, where the interior/exterior limits are crossed and blurred. A project with light colors, wood and lots of natural light from outside.

Access to the house is via the upper floor, with a large hall that houses the stairwell and delimits the two modules of the villa. The 3 bedrooms of this villa are located on this floor. In one wing is the master bedroom, spacious and bright, with a private terrace and a spectacular en-suite bathroom. The other wing houses the other two bedrooms, both with en-suite bathrooms and a large terrace.

On the ground floor is the day time area, a large open kitchen with an impressive island, with a breakfast bench, open view to the porch, a spectacular summer dining area facing the sea, with barbecue and outdoor bathroom. The living-dining room also has an exquisite porch, which further enhances the idea of "living outside" with several seating areas next to the infinity pool and jacuzzi, to enjoy the wonderful sunny days that the Costa Blanca offers without losing sight of the Mediterranean Sea.

The property continues to surprise us, as there is still a basement of almost 30m<sup>2</sup>, with porch and private terrace, to create a unique space, from an extra bedroom, a work area or whatever it is the new owner desires.

Residential Area is situated within the Cumbre del Sol urbanization and, therefore, all the properties within the area also enjoy all the services available within this established urbanization, which has a shopping area with supermarket, hairdresser, chemist, bars and restaurants, the international school Lady Elizabeth School and a extensive range of outdoor sports options with tennis and paddle courts, hiking trails, horse-riding school, not forgetting the Moraig beach with its beach bars and the Cala Llebeig and Cala Los Tiestos coves, of great beauty and charm.

Plus all the eateries and leisure options available in the neighbouring towns of Benitachell, Javea (only 7 km away) and Teulada-Moraira (only 4km away), which are all internationally renowned prestigious tourist destinations, and situated half-way between both Alicante and Valencia cities.

Alicante airport located 1 hour drive away.

## Location

Benitachell, Costa Blanca North, Alicante

Benitachell, also known as El Poble Nou de Benitatxell, is a small and picturesque village located on the Costa Blanca in the province of Alicante, Spain. Situated between the towns of Jávea and Moraira, Benitachell offers a peaceful and charming atmosphere with a blend of traditional Spanish character and modern amenities.

One of the notable features of Benitachell is its location on a hillside, offering panoramic views of the Mediterranean Sea and the surrounding countryside. The...

### Lexington Realty

C/ Finlandia 19, Bl. 1, Loc. 2  
Commercial Centre Gran Alacant  
03130 Santa Pola, ALICANTE

### Contact us

W: [www.lexington-realty.com](http://www.lexington-realty.com)  
T: +34 966 69 51 52  
M: [contact@lexington-realty.com](mailto:contact@lexington-realty.com)





**Lexington Realty**

C/ Finlandia 19, Bl. 1, Loc. 2  
Commercial Centre Gran Alacant  
03130 Santa Pola, ALICANTE

**Contact us**

W: [www.lexington-realty.com](http://www.lexington-realty.com)  
T: +34 966 69 51 52  
M: [contact@lexington-realty.com](mailto:contact@lexington-realty.com)

