



Detached Villa in Alhama De Murcia - New build

ALHAMA DE MURCIA

378,900€

ID # N6888



149m²



4



3



452m²

• Close To Schools

• Roof terrace

• Pre-installed air conditioning

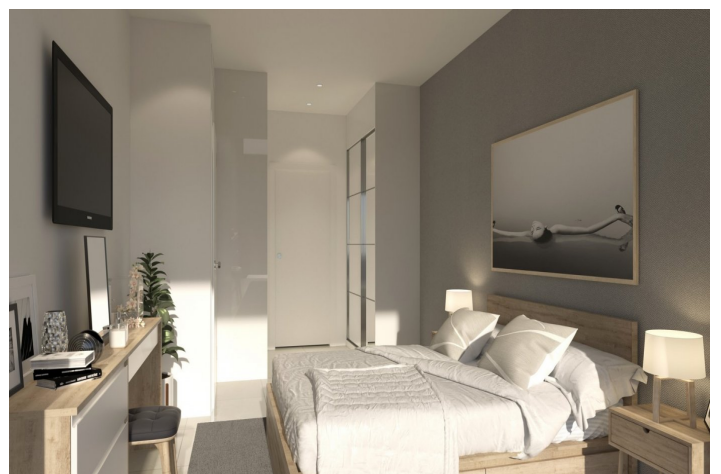
Lexington Realty

C/ Finlandia 19, Bl. 1, Loc. 2
Commercial Centre Gran Alacant
03130 Santa Pola, ALICANTE

Contact us

W: www.lexington-realty.com
T: +34 966 69 51 52
M: contact@lexington-realty.com





Description

MEDITERRANEAN VILLA ON THE GOLF COURSE

Villa next to the golf course in Alhama.

The complex is supervised 24h/24h. You will find a commercial centre with many restaurants, shops, hairdresser, supermarket, etc. The project is about 15 minutes from the beaches of Mazarron and Murcia International Airport, and 30 minutes from the Natural Park of Sierra Espuña.

Located in the heart of the Costa Cálida, between big cities like Murcia and Cartagena.

Location

Alhama De Murcia



Lexington Realty

C/ Finlandia 19, Bl. 1, Loc. 2
Commercial Centre Gran Alacant
03130 Santa Pola, ALICANTE

Contact us

W: www.lexington-realty.com
T: +34 966 69 51 52
M: contact@lexington-realty.com

