



Apartment in Hondón de las Nieves - New build

HONDÓN DE LAS NIEVES

205,000€

ID # N8775



83m²



2



2



• Swimming pool: Communal

• Close To Schools

• Lift

• Pre-installed air conditioning

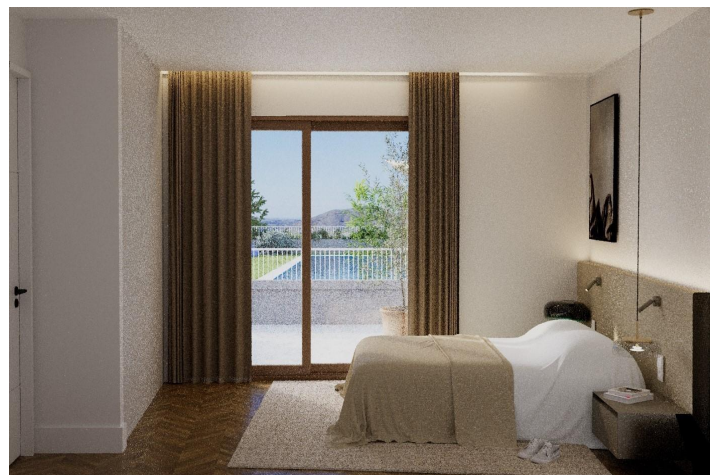
Lexington Realty

C/ Finlandia 19, Bl. 1, Loc. 2
Commercial Centre Gran Alacant
03130 Santa Pola, ALICANTE

Contact us

W: www.lexington-realty.com
T: +34 966 69 51 52
M: contact@lexington-realty.com





Description

Exclusive New Build Apartments with Views of the Vineyards in Hondón de las Nieves

Modern Homes in a Unique Natural Setting

Discover this new development of flats in Hondón de las Nieves, a charming village set in a beautiful valley surrounded by olive and almond groves. This development offers 15 exclusive 2 and 3 bedroom homes, all designed to offer maximum comfort, energy efficiency and stunning views of the Vinalopó vineyards.

Located in Vinalopó Medio, this peaceful enclave is ideal for those seeking a relaxed Mediterranean lifestyle, with easy access to nature and all essential services.

High Quality Features and Modern Design

Each flat has been designed with top quality materials and a functional layout, offering:

Spacious and open-plan living spaces, ideal for modern living.

Fully fitted kitchens with granite worktops.

Top of the range bathrooms with built-in cisterns and top quality sanitary ware.

Energy efficiency with aerothermal system for hot water.

Pre-installation of ducted air conditioning, guaranteeing comfort in all seasons.

Aluminium windows with double glazing, providing thermal and acoustic insulation.

Reinforced security entrance door for peace of mind.

Parking space and storage room in basement, included in the price.

Lift in the building, ensuring accessibility and comfort.

Solar panels on the rooftop to improve energy efficiency and reduce maintenance costs.

In addition, the residential has a communal swimming pool, perfect for enjoying the Mediterranean climate.

Privileged location in Hondón de las Nieves

Hondón de las Nieves is a town with a great wine-growing tradition, famous for its table grapes with the Vinalopó denomination of origin. Surrounded by the Sierra de Crevillente, the area offers numerous hiking trails, natural areas and a rich cultural and historical offer.

From your new home, you will have quick access to the main points of interest in the area:

Alicante Airport - 30 km (30 minutes by car).

Alicante Beaches - 35 km (35 minutes by car)

Elche - 20 km (20 minutes by car)

Crevillente Natural Park - 10 km (15 minutes drive)

Golf Courses - 25 km (30 minutes drive)

An Ideal Home on the Costa Blanca

Enjoy the tranquillity of the Hondón Valley, without giving up the proximity to Alicante and Elche. Whether as a permanent residence, holiday home or investment property, these modern flats are an unbeatable choice.

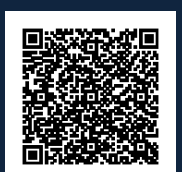
Contact us today for more information or to arrange a viewing.

Lexington Realty

C/ Finlandia 19, Bl. 1, Loc. 2
Commercial Centre Gran Alacant
03130 Santa Pola, ALICANTE

Contact us

W: www.lexington-realty.com
T: +34 966 69 51 52
M: contact@lexington-realty.com



Location

Hondón de las Nieves, Costa Blanca South, Alicante



Lexington Realty

C/ Finlandia 19, Bl. 1, Loc. 2
Commercial Centre Gran Alacant
03130 Santa Pola, ALICANTE

Contact us

W: www.lexington-realty.com
T: +34 966 69 51 52
M: contact@lexington-realty.com

