



Chalet independiente en Altea - Reventa

ALTEA

720.000€

ID # CB8205



405 m²



6



4



439 m²



- Piscina: Privado
- Vistas al mar
- Cerca de supermercado
- Chimenea
- Cerca de colegios
- Orientación sur
- Cerca de golf
- Vistas a la montaña
- Adaptado a minusválidos
- Cerca de la playa
- Barbacoa
- 2ª plaza de parking
- Trastero
- Calefacción central
- Riego por goteo

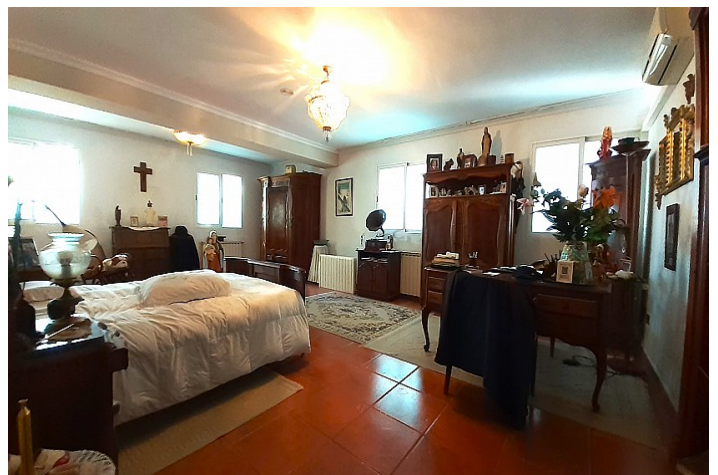
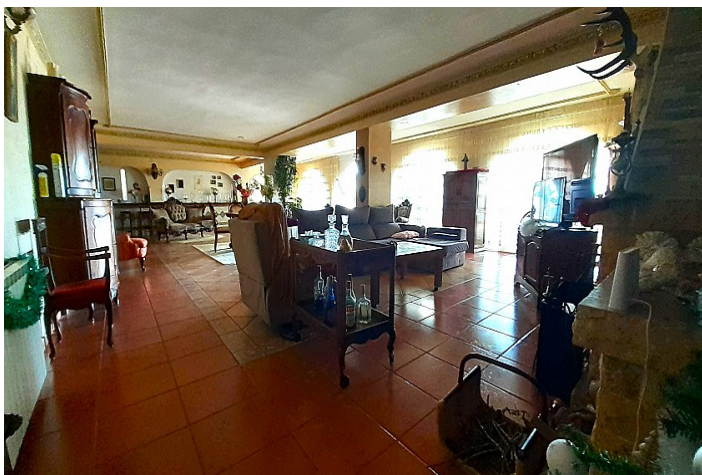
Lexington Realty

C/ Finlandia 19, Bl. 1, Loc. 2
Commercial Centre Gran Alacant
03130 Santa Pola, ALICANTE

Contáctenos

W: www.lexington-realty.com
T: +34 966 69 51 52
M: contact@lexington-realty.com





Descripción

Sea view-Finca, walking distance to Altea

Rarely offered property, with original Spanish charm. Perfect finca for: the numerous families, people who like to have visitors, a bed and breakfast place, rental business.

The 4339 square meter finca, is located on a corner plot in the countryside. But only 1.5 kilometers from a supermarket and walking distance, to the picturesque old town of Altea. The beach of Altea are two kilometers away. Three nearest golf courts: within a 7-, 14- and 21-kilometer drive. Alicante airport: 74 km. or one hour drive.

A rural wall with tiles on top is fencing the property. Entrance with electric gate and lots of parking space in the area in front of the house.

Approximately 405 m2 living area, 6 bedrooms, 4 bathrooms, 2 kitchens.

The entrance hall, on the main floor, has large built -in cabinets. One door leads to a utility room, another door to the 100 square meter stately living room with a fire place and access to the pool terrace. A staircase from the entrance hall takes you to - another world - a charming little bodega.

The large kitchen and dining room also has access to the pool terrace. In the kitchen you also have a door to an inner garden area with an aviary and a dog house. A nice protected area, where to eat outside, on a windy day.

Three bedrooms, whereof the master bedroom is extremely spacious, 36 m2. The 22 m2 bathroom en suite has jacuzzi and a large in-built wardrobe.

First floor has its own separate staircase and entrance. Large living room, three bedrooms. Kitchen. Very big terraces with views to both the sea and the mountains of Puig Campana and Leon Dormido. From the other side of the property you can see the mountain, Sierra Bernia.

Large pool terrace with mediterranean plants. Here you can sit in the shade from the big rubber trees and enjoy the view over the landscape. Under the pool terrace, is the large pool-technical room. Great storage capacity in this place.

The 80 m2 kidney-shaped pool has a declining access from one end. Very convenient for children and old persons.

The property has central gas-heating by 10 radiators.

There is garden with palms and mediterranean plants all around the house. On the southern side are two flat terraces of land, where of the biggest measures 1.600 square meter.

Two smaller buildings in the garden can be used as machine- and tool room, for storage of firewood or for animals.

A country property with many possibilities, located close to town and sea.

