



Fristående villa i Fuente Álamo - Nyproduktion

FUENTE ÁLAMO

216.000€

ID # N6871



- Pre-installed air conditioning

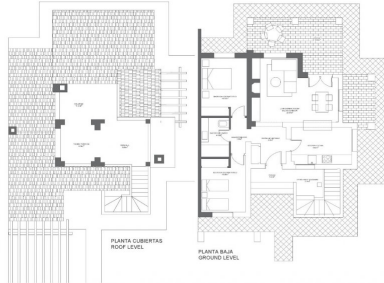
Lexington Realty

C/ Finlandia 19, Bl. 1, Loc. 2
Commercial Centre Gran Alacant
03130 Santa Pola, ALICANTE

Contact us

W: www.lexington-realty.com
T: +34 966 69 51 52
M: contact@lexington-realty.com





PARCELA/PLOT SIZE 7:	434m ²	PARCELA/PLOT SIZE 19:	430m ²	AREA CONSTRUCTIBLE SUPERFICIE:	148.54m ²
PARCELA/PLOT SIZE 9:	434m ²	PARCELA/PLOT SIZE 09:	414m ²	AREA CONSTRUCTIBLE SUPERFICIE:	114.51m ²
PARCELA/PLOT SIZE 17:	434m ²	PARCELA/PLOT SIZE 11:	418m ²	AREA CONSTRUCTIBLE SUPERFICIE:	175.78m ²
				TOTAL AREA:	



Beskrivning

KEY READY SEMI-DETACHED VILLA IN FUENTE ALAMO, MURCIA

Residential of townhouses, independent and semi-detached villas in Fuente Álamo, Murcia.

There are seven different models of houses to choose from, designed to suit everyone's taste.

Rustic designs combined with top quality materials and a focus on comfortable living space there is something for everyone. The residents of this private community of beautiful, spacious homes will also be able to enjoy their own communal gardens and swimming pools.

This unusual design semi-detached villa has 2 bedrooms and 1 bathroom, independent kitchen, living room with patio doors leading onto the covered porch and semi covered roof top terrace.

An options for a private pool at an extra cost.

Fuente Álamo de Murcia is a town and municipality in the Region of Murcia, southern Spain. It is situated 22 km northwest of Cartagena and 35 km south west of Murcia.

The town lies in the basin of the Mar Menor surrounded by the mountains of Algarrobo, Los Gómez, Los Victorias and the Carrascoy.

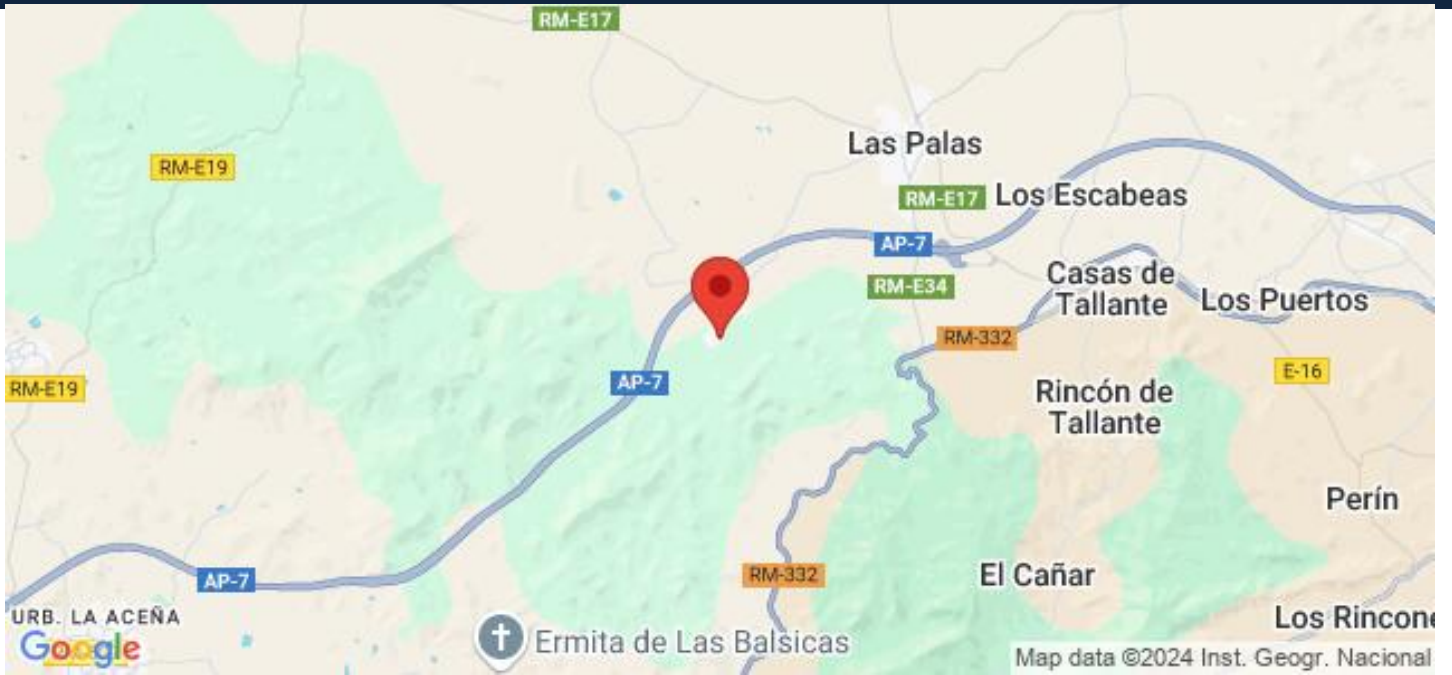
The water from these mountains flows down into the Rambla de Fuente Álamo and then onto the Mar Menor.

Fuente Álamo located 30 minutes from Murcia - Corvera airport.

Läge

Fuente Álamo





Lexington Realty

C/ Finlandia 19, Bl. 1, Loc. 2
Commercial Centre Gran Alacant
03130 Santa Pola, ALICANTE

Contact us

W: www.lexington-realty.com
T: +34 966 69 51 52
M: contact@lexington-realty.com

