



Fristående villa i Fuente Álamo - Nyproduktion

FUENTE ÁLAMO

335.000€

ID # N6958



205m²



3



2



843m²

• Dakterras

• Nära golbana

• Pre-installed air conditioning

Lexington Realty

C/ Finlandia 19, Bl. 1, Loc. 2
Commercial Centre Gran Alacant
03130 Santa Pola, ALICANTE

Contact us

W: www.lexington-realty.com
T: +34 966 69 51 52
M: contact@lexington-realty.com

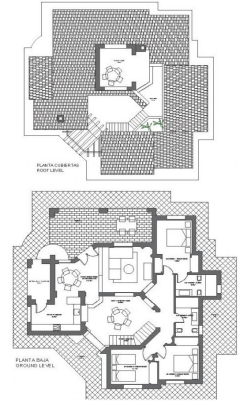




PLANO LOCALIZACION



PARCELA PLOT SIZE 14: 818m ²	SUPERFICIE ÚTIL USABLE AREA: 168.88m ²
PARCELA PLOT SIZE 39: 859m ²	SUP. CONSTRUIDA CUBIERTA: 162.75m ²
PARCELA PLOT SIZE 10: 886m ²	COVERED BUILT AREA:
PARCELA PLOT SIZE 25: 846m ²	SUP. CONSTRUIDA TOTAL: 205.26m ²
PARCELA PLOT SIZE 15: 856m ²	TOTAL BUILT AREA:
PARCELA PLOT SIZE 7: 843m ²	



Beskrivning

KEY READY VILLA IN FUENTE ALAMO, MURCIA

Residential of townhouses, independent and semi-detached villas in Fuente Álamo, Murcia.

There are seven different models of houses to choose from, designed to suit everyone's taste.

Rustic designs combined with top quality materials and a focus on comfortable living space there is something for everyone. The residents of this private community of beautiful, spacious homes will also be able to enjoy their own communal gardens and swimming pools.

This unusual design villa has 3 bedrooms and 2 bathroom, independent kitchen, living room with patio doors leading onto the covered porch.

An options for a private pool at an extra cost.

Fuente Álamo de Murcia is a town and municipality in the Region of Murcia, southern Spain. It is situated 22 km northwest of Cartagena and 35 km south west of Murcia.

The town lies in the basin of the Mar Menor surrounded by the mountains of Algarrobo, Los Gómez, Los Victorias and the Carrascoy.

The water from these mountains flows down into the Rambla de Fuente Álamo and then onto the Mar Menor.

Fuente Álamo located 30 minutes from Murcia - Corvera airport.

Läge

Fuente Álamo





Lexington Realty

C/ Finlandia 19, Bl. 1, Loc. 2
Commercial Centre Gran Alacant
03130 Santa Pola, ALICANTE

Contact us

W: www.lexington-realty.com
T: +34 966 69 51 52
M: contact@lexington-realty.com

