



Fristående villa i Torre Pacheco - Nyproduktion

TORRE PACHECO

320.000€

ID # N7649



- Pool: Privat
- Close To Schools
- Dakterras
- Nära golbana
- Pre-installed air conditioning

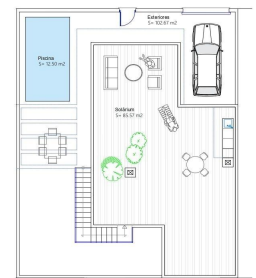
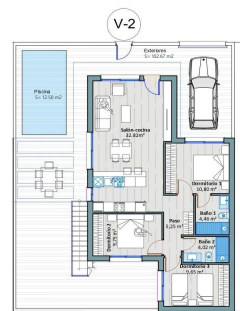
Lexington Realty

C/ Finlandia 19, Bl. 1, Loc. 2
Commercial Centre Gran Alacant
03130 Santa Pola, ALICANTE

Contact us

W: www.lexington-realty.com
T: +34 966 69 51 52
M: contact@lexington-realty.com





VIVIENDA N° 2
 Súp. Principal: 200,00 M²
 Súp. Construida: 92,17 M²
 Súp. Exteriores: 108,24 M²
 Súp. Piscina: 12,50 M²



Beskrivning

NEW BUILD SEMI-DETACHED VILLAS IN TORRE-PACHECO

New Build semi detached villas in Torre Pacheco.

Modern detached one level villas with 2, 3 or 4 bedrooms and 2 bathrooms., open plan kitchen with the living/dining area. Each property has its own private pool, solarium with summer kitchen.

The interiors, elegant and functional, boast high-quality flooring, bathrooms, and kitchens tiled with first-class ceramic tiles, and appliances from recognised brands.

The bedrooms include integrated wardrobes.

Each villa has pre-installation for air conditioning and fibre optic installation.

Located next to Club de Golf, Torre Pacheco, where you will find all amenities including bars, restaurants, supermarkets and banks and a 15min drive to the lovely beaches of the Mar Menor.

Torre Pacheco is surrounded by award winning golf courses and the whole region is regarded as one of the healthiest places to be in Spain.

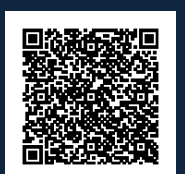
This ideal location gives you so much more for your money. Within walking distance to local amenities and many bars and restaurants.

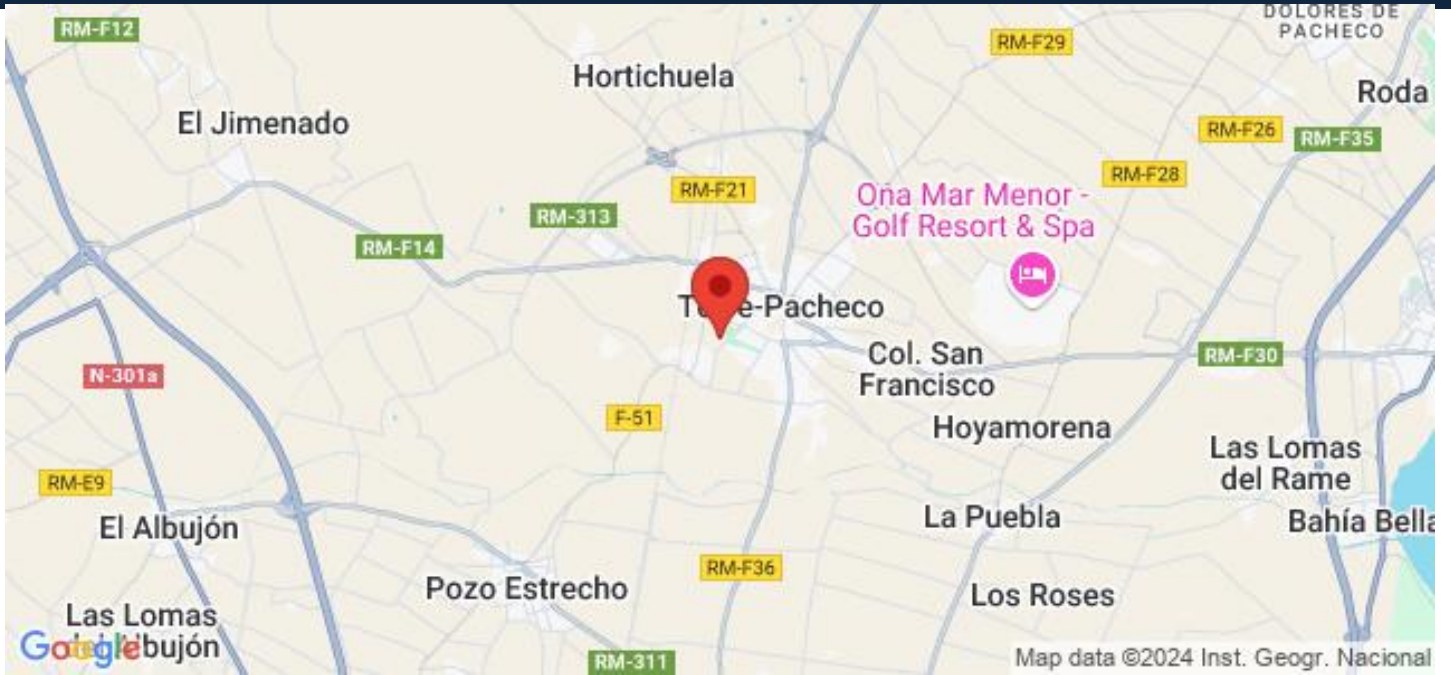
Motorway network nearby to enable you to travel to other areas quickly and easily.

Murcia international airport is 20 minutes away.

Läge

Torre Pacheco , Costa Blanca Söder, Alicante





Lexington Realty

C/ Finlandia 19, Bl. 1, Loc. 2
Commercial Centre Gran Alacant
03130 Santa Pola, ALICANTE

Contact us

W: www.lexington-realty.com
T: +34 966 69 51 52
M: contact@lexington-realty.com

