



Bungalow i Torre Pacheco - Nyproduktion

TORRE PACHECO

210.000€

ID # N8559



78m²



2



2



• Pool: Gemensam

• Close To Schools

• Luftkonditionering

• Nära golbana

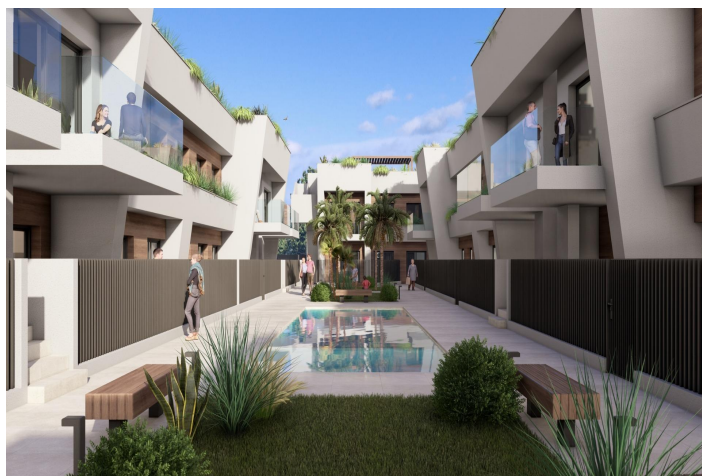
Lexington Realty

C/ Finlandia 19, Bl. 1, Loc. 2
Commercial Centre Gran Alacant
03130 Santa Pola, ALICANTE

Contact us

W: www.lexington-realty.com
T: +34 966 69 51 52
M: contact@lexington-realty.com





Lexington Realty

C/ Finlandia 19, Bl. 1, Loc. 2
Commercial Centre Gran Alacant
03130 Santa Pola, ALICANTE

Contact us

W: www.lexington-realty.com
T: +34 966 69 51 52
M: contact@lexington-realty.com



Beskrivning

New Construction Homes in Torre-Pacheco, Costa Cálida

Modern Bungalows with Exceptional Features

Discover a new residential complex in Torre-Pacheco, offering 24 stylish bungalows with 2 or 3 bedrooms. Choose between ground-floor homes with spacious terraces or first-floor units boasting private terraces and solariums. Each solarium includes a pergola, a barbecue area, and reinforced roofing, perfect for installing a jacuzzi. All homes come with a designated parking space and fully installed air conditioning, ensuring comfort year-round.

Prime Location in Torre-Pacheco

Nestled in the heart of Torre-Pacheco, this development enjoys proximity to essential amenities, including supermarkets, shops, bars, and restaurants. The vibrant town center, with its charming Spanish ambiance, is within walking distance. For beach lovers, the stunning Mar Menor is just a 10-minute drive away, offering golden sands and crystal-clear waters.

Enjoy Outstanding Community Amenities

The complex features a beautifully landscaped community area with lush gardens and a sparkling pool, providing a serene retreat to relax and unwind. The area's sunny climate, averaging 320 days of sunshine annually, complements these outdoor spaces perfectly.

Surrounded by Award-Winning Golf Courses

Torre-Pacheco is a golfer's paradise, surrounded by some of the most renowned golf courses in Spain. These courses are just a short drive away, making it an ideal location for golf enthusiasts.

Strategic Connections to Key Destinations

Murcia International Airport: 20 km (approximately 20 minutes by car).

Train Station: Only 700 meters away, offering convenient travel options.

Shopping Centers: Several large shopping complexes within a 15 km radius.

Beaches: The beautiful Costa Cálida beaches are a mere 10 km away.

Ports and Marinas: The closest marina is around 12 km away, perfect for boating and water sports.

A Healthier Lifestyle Awaits

The Costa Cálida region is renowned for its exceptional quality of life. With low humidity, clean air, and a subtropical climate, this area is one of the healthiest in Spain. The perfect combination of natural beauty, sea breezes, and abundant sunlight makes Torre-Pacheco a highly sought-after destination.

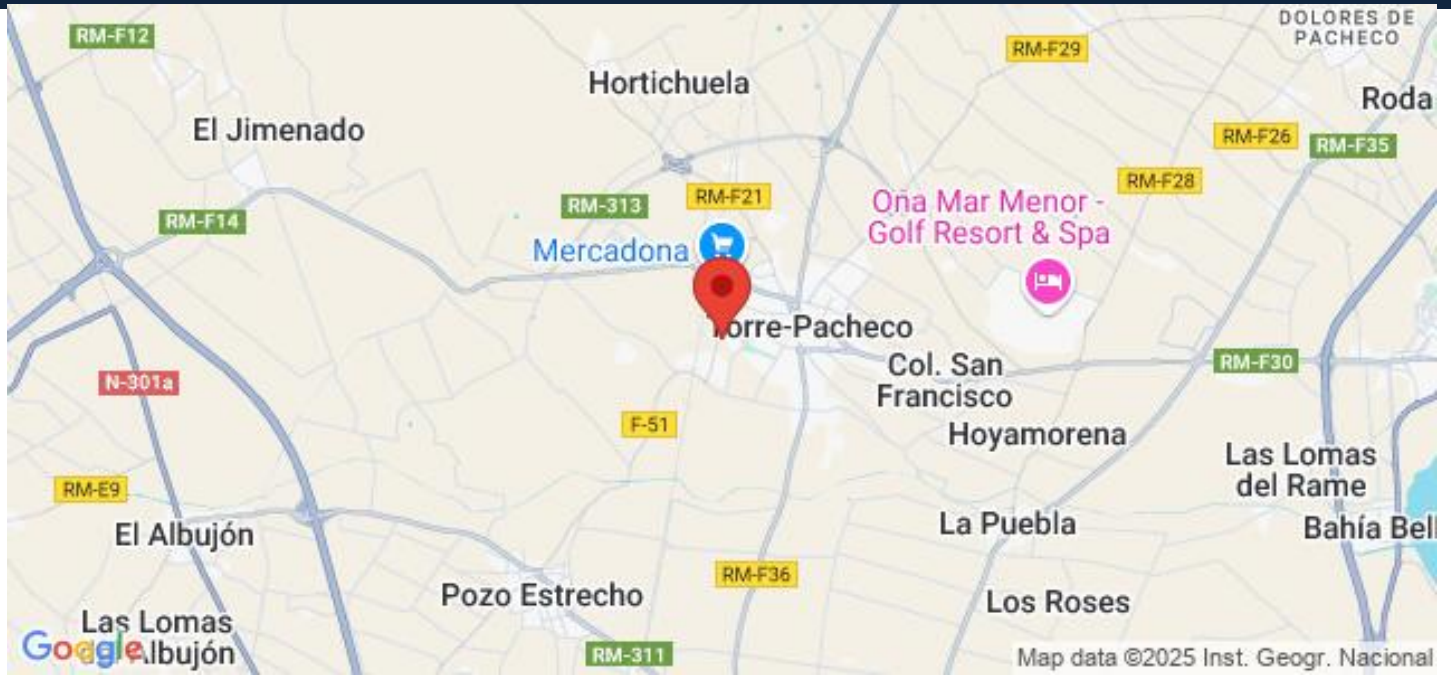
Act Now to Secure Your Dream Home

Don't miss this opportunity to own a modern home in a prime location. Contact us today to learn more about this incredible development or to schedule a viewing!

Läge

Torre Pacheco , Costa Blanca Söder, Alicante





Lexington Realty

C/ Finlandia 19, Bl. 1, Loc. 2
Commercial Centre Gran Alacant
03130 Santa Pola, ALICANTE

Contact us

W: www.lexington-realty.com
T: +34 966 69 51 52
M: contact@lexington-realty.com

